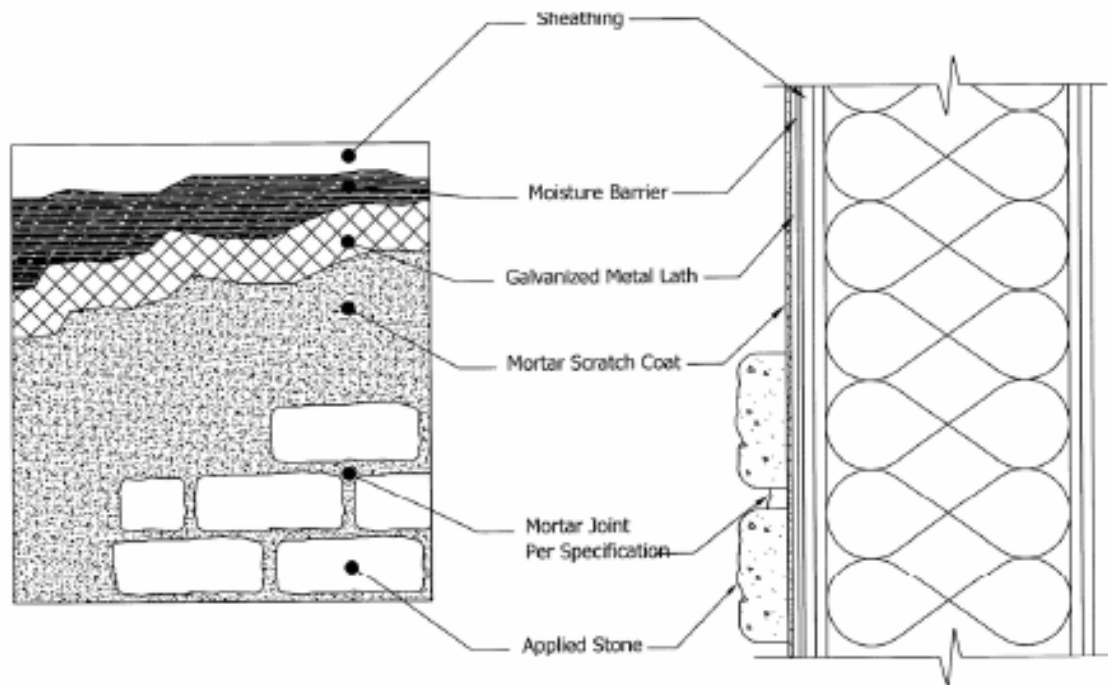




# ENVIRONMENTAL STONEWORKS

## Installation Over Rigid Sheathing With Wood Framing



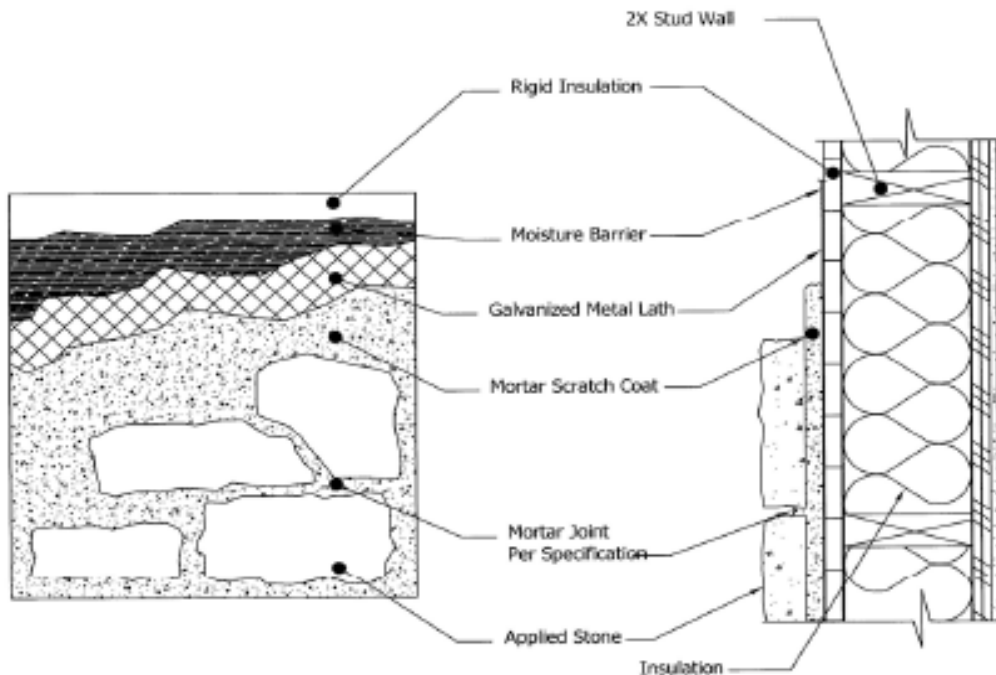
### **Specifications:**

- **Weather Resistive Barrier:** No. 15 non-perforated asphalt-saturated organic felt paper or a house-wrap product supported by a current evaluation report showing equivalency to Grade D building paper complying with ASTM D-226
- **Galvanized Metal Lath:** Corrosion resistant minimum 2.5 lbs per square yard expanded metal lath that complies with ASTM C 847 (complying with local codes in effect) or corrosion resistant minimum 18 gauge woven wire mesh that complies with ASTM C 1032. See detailed Manufactured Stone Veneer Installation Procedures for fastener specs.
- **Mortar Scratch Coat and Mortar Joints (if applicable),** proportions by volume:
  - Portland Type I/II Cement ASTM C-150 (1 part), Masonry Type-N Cement ASTM C-270 (1 part), Masonry sand ASTM C-144 (3 parts), water added to achieve firm, moist consistency, pigment (powder or liquid) ASTM C979 optional, <or>
  - Masonry Type-S Cement ASTM C270 (1 part), Masonry sand ASTM C-144 (3 parts), water added to achieve firm and moist consistency, pigment (powder or liquid) ASTM C979 optional
- **Manufactured Stone Veneer and Accessories:** meeting ICC-ES AC-51 Criteria
- **Applied:** per Environmental Stoneworks Manufactured Stone Veneer Installation Procedures



# ENVIRONMENTAL STONEWORKS

## Installation Over Rigid Insulation With Wood Framing



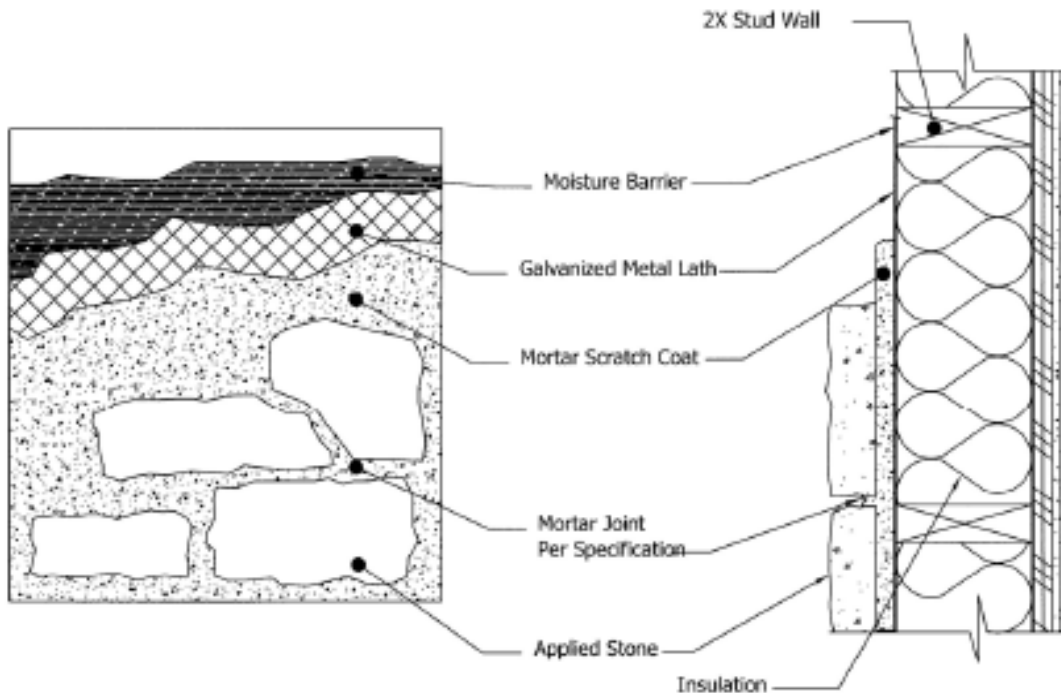
### **Specifications:**

- **Weather Resistive Barrier:** No. 15 non-perforated asphalt-saturated organic felt paper or a house-wrap product supported by a current evaluation report showing equivalency to Grade D building paper complying with ASTM D-226
- **Galvanized Metal Lath:** Corrosion resistant minimum 2.5 lbs per square yard expanded metal lath that complies with ASTM C 847 (complying with local codes in effect) or corrosion resistant minimum 18 gauge woven wire mesh that complies with ASTM C 1032. See detailed Manufactured Stone Veneer Installation Procedures for fastener specs.
- **Mortar Scratch Coat and Mortar Joints (if applicable),** proportions by volume:
  - Portland Type I/II Cement ASTM C-150 (1 part), Masonry Type-N Cement ASTM C-270 (1 part), Masonry sand ASTM C-144 (3 parts), water added to achieve firm, moist consistency, pigment (powder or liquid) ASTM C979 optional, <or>
  - Masonry Type-S Cement ASTM C270 (1 part), Masonry sand ASTM C-144 (3 parts), water added to achieve firm and moist consistency, pigment (powder or liquid) ASTM C979 optional
- **Manufactured Stone Veneer and Accessories:** meeting ICC-ES AC-51 Criteria
- **Applied:** per Environmental Stoneworks Manufactured Stone Veneer Installation Procedures



# ENVIRONMENTAL STONEWORKS

## Installation Over Open Stud Framing (Wood)



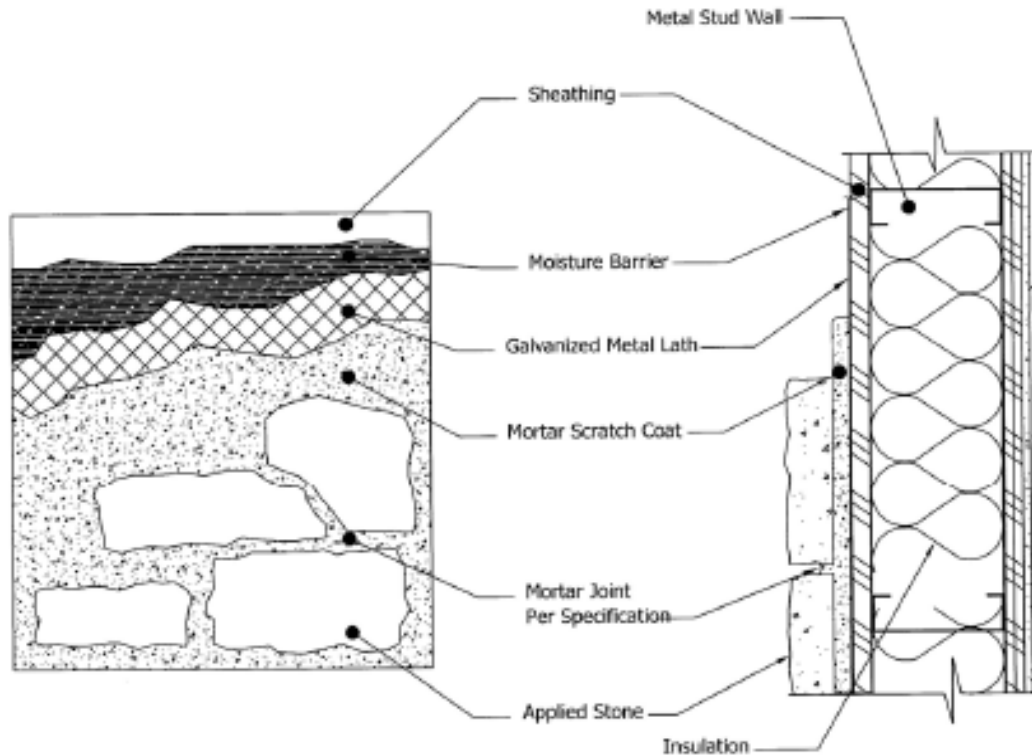
### **Specifications:**

- **Weather Resistive Barrier:** No. 15 non-perforated asphalt-saturated organic felt paper or a house-wrap product supported by a current evaluation report showing equivalency to Grade D building paper complying with ASTM D-226
- **Galvanized Metal Lath:** Corrosion resistant minimum 3.4 lbs per square yard, 3/8" paper backed lath (paper backing shall meet the requirements of ASTM D226 to be considered a substitute for Weather Resistive Barrier); complying with local codes in effect). See detailed Manufactured Stone Veneer Installation Procedures for fastener specs.
- **Mortar Scratch Coat and Mortar Joints (if applicable),** proportions by volume:
  - Portland Type I/II Cement ASTM C-150 (1 part), Masonry Type-N Cement ASTM C-270 (1 part), Masonry sand ASTM C-144 (3 parts), water added to achieve firm, moist consistency, pigment (powder or liquid) ASTM C979 optional, <or>
  - Masonry Type-S Cement ASTM C270 (1 part), Masonry sand ASTM C-144 (3 parts), water added to achieve firm and moist consistency, pigment (powder or liquid) ASTM C979 optional
- **Manufactured Stone Veneer and Accessories:** meeting ICC-ES AC-51 Criteria
- **Applied:** per Environmental Stoneworks Manufactured Stone Veneer Installation Procedures



# ENVIRONMENTAL STONEWORKS

## Installation Over Rigid Sheathing With Metal Framing



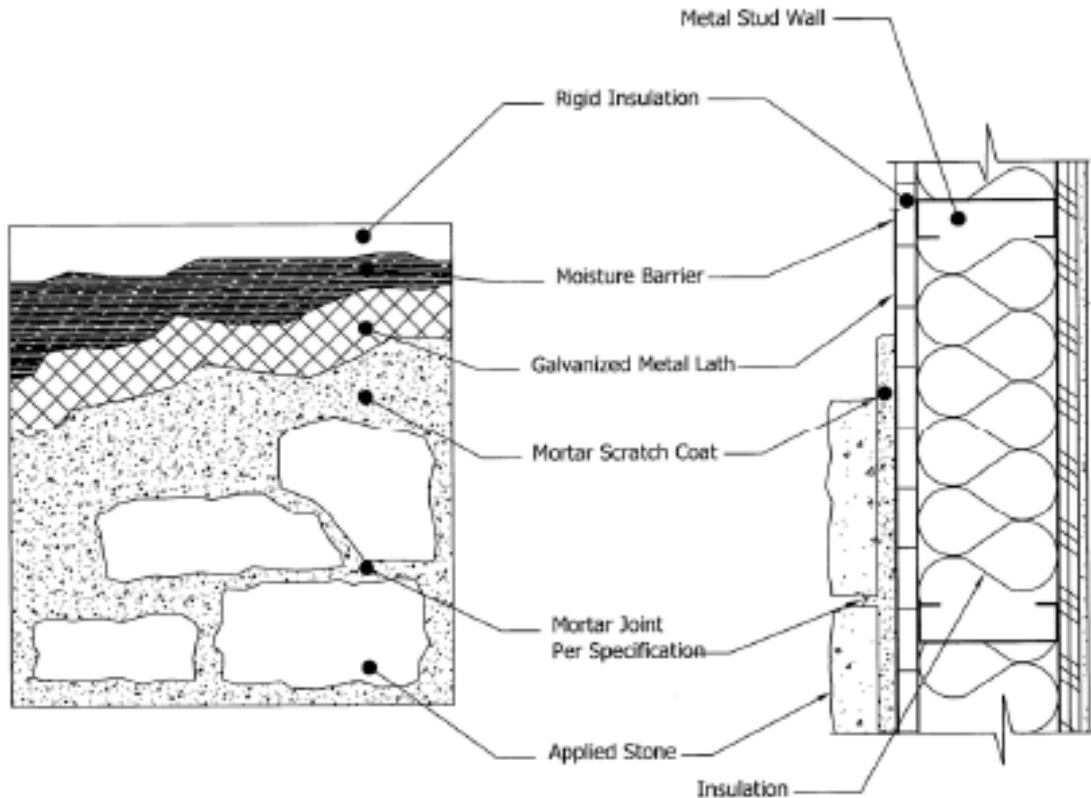
### **Specifications:**

- **Weather Resistive Barrier:** No. 15 non-perforated asphalt-saturated organic felt paper or a house-wrap product supported by a current evaluation report showing equivalency to Grade D building paper complying with ASTM D-226
- **Galvanized Metal Lath:** Corrosion resistant minimum 2.5 lbs per square yard expanded metal lath that complies with ASTM C 847 (complying with local codes in effect) or corrosion resistant minimum 18 gauge woven wire mesh that complies with ASTM C 1032. See detailed Manufactured Stone Veneer Installation Procedures for fastener specs.
- **Mortar Scratch Coat and Mortar Joints (if applicable),** proportions by volume:
  - Portland Type I/II Cement ASTM C-150 (1 part), Masonry Type-N Cement ASTM C-270 (1 part), Masonry sand ASTM C-144 (3 parts), water added to achieve firm, moist consistency, pigment (powder or liquid) ASTM C979 optional, <or>
  - Masonry Type-S Cement ASTM C270 (1 part), Masonry sand ASTM C-144 (3 parts), water added to achieve firm and moist consistency, pigment (powder or liquid) ASTM C979 optional
- **Manufactured Stone Veneer and Accessories:** meeting ICC-ES AC-51 Criteria
- **Applied:** per Environmental Stoneworks Manufactured Stone Veneer Installation Procedures



# ENVIRONMENTAL STONEWORKS

## Installation Over Rigid Insulation With Metal Framing



### **Specifications:**

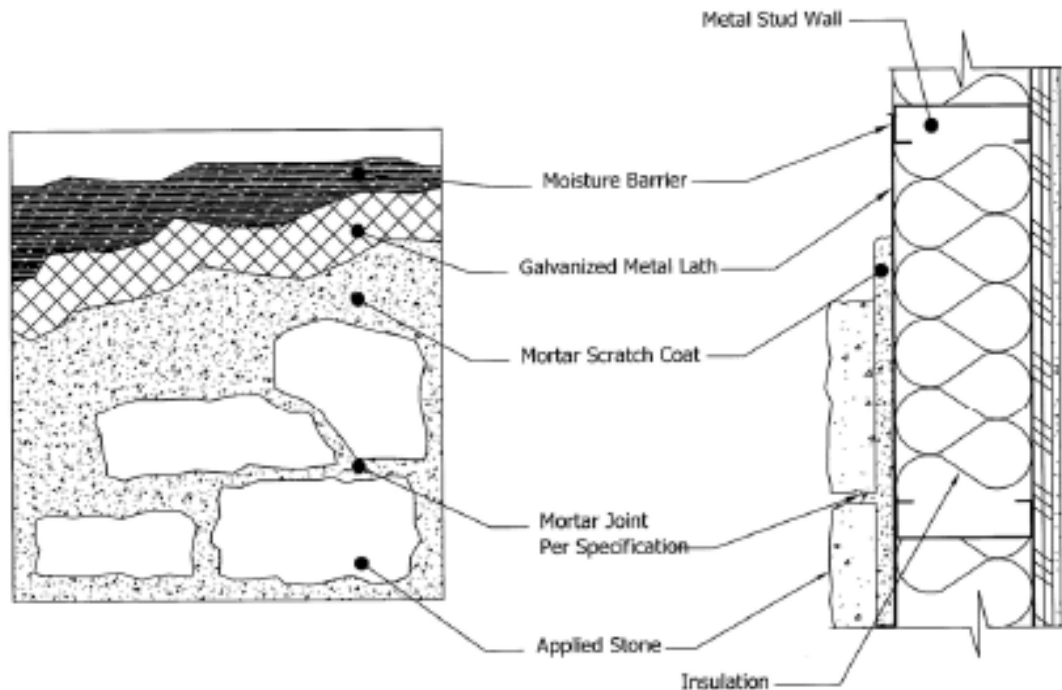
- **Weather Resistive Barrier:** No. 15 non-perforated asphalt-saturated organic felt paper or a house-wrap product supported by a current evaluation report showing equivalency to Grade D building paper complying with ASTM D-226
- **Galvanized Metal Lath:** Corrosion resistant minimum 2.5 lbs per square yard expanded metal lath that complies with ASTM C 847 (complying with local codes in effect) or corrosion resistant minimum 18 gauge woven wire mesh that complies with ASTM C 1032. See detailed Manufactured Stone Veneer Installation Procedures for fastener specs.
- **Mortar Scratch Coat and Mortar Joints (if applicable),** proportions by volume:
  - Portland Type I/II Cement ASTM C-150 (1 part), Masonry Type-N Cement ASTM C-270 (1 part), Masonry sand ASTM C-144 (3 parts), water added to achieve firm, moist consistency, pigment (powder or liquid) ASTM C979 optional, <or>
  - Masonry Type-S Cement ASTM C270 (1 part), Masonry sand ASTM C-144 (3 parts), water added to achieve firm and moist consistency, pigment (powder or liquid) ASTM C979 optional
- **Manufactured Stone Veneer and Accessories:** meeting ICC-ES AC-51 Criteria
- **Applied:** per Environmental Stoneworks Manufactured Stone Veneer Installation Procedures





# ENVIRONMENTAL STONEWORKS

## Installation Over Open Stud Framing (Metal)



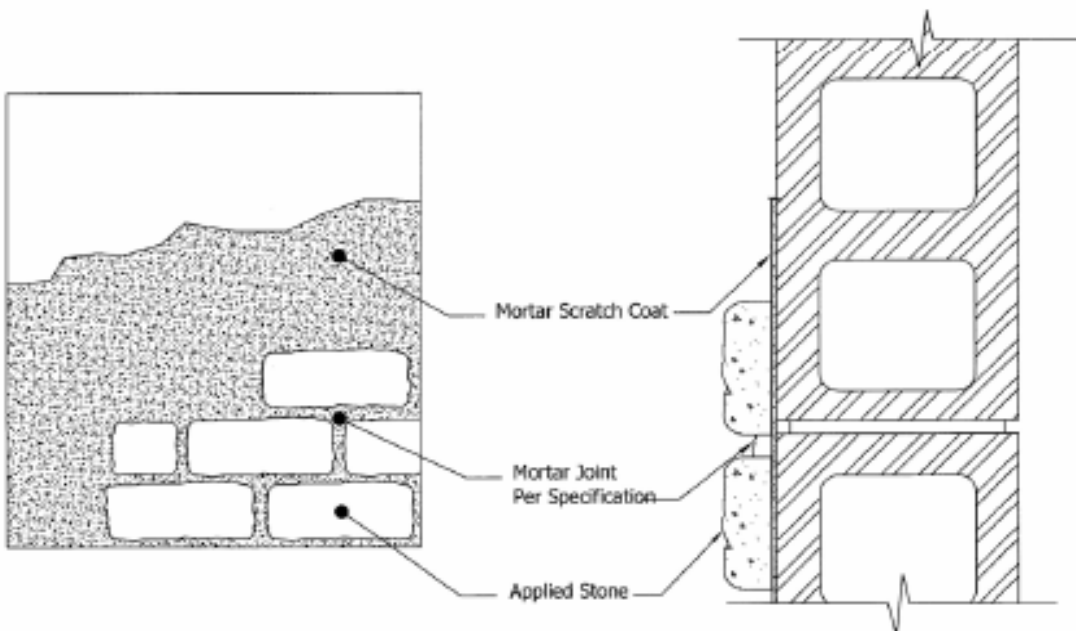
### **Specifications:**

- **Weather Resistive Barrier:** No. 15 non-perforated asphalt-saturated organic felt paper or a house-wrap product supported by a current evaluation report showing equivalency to Grade D building paper complying with ASTM D-226
- **Galvanized Metal Lath:** Corrosion resistant minimum 3.4 lbs per square yard, 3/8" paper backed lath (paper backing shall meet the requirements of ASTM D226 to be considered a substitute for Weather Resistive Barrier); complying with local codes in effect). See detailed Manufactured Stone Veneer Installation Procedures for fastener specs.
- **Mortar Scratch Coat and Mortar Joints (if applicable),** proportions by volume:
  - Portland Type I/II Cement ASTM C-150 (1 part), Masonry Type-N Cement ASTM C-270 (1 part), Masonry sand ASTM C-144 (3 parts), water added to achieve firm, moist consistency, pigment (powder or liquid) ASTM C979 optional, <or>
  - Masonry Type-S Cement ASTM C270 (1 part), Masonry sand ASTM C-144 (3 parts), water added to achieve firm and moist consistency, pigment (powder or liquid) ASTM C979 optional
- **Manufactured Stone Veneer and Accessories:** meeting ICC-ES AC-51 Criteria
- **Applied:** per Environmental Stoneworks Manufactured Stone Veneer Installation Procedures



# ENVIRONMENTAL STONEWORKS

## Installation Over CMU Block Wall or Unfinished Masonry Surface



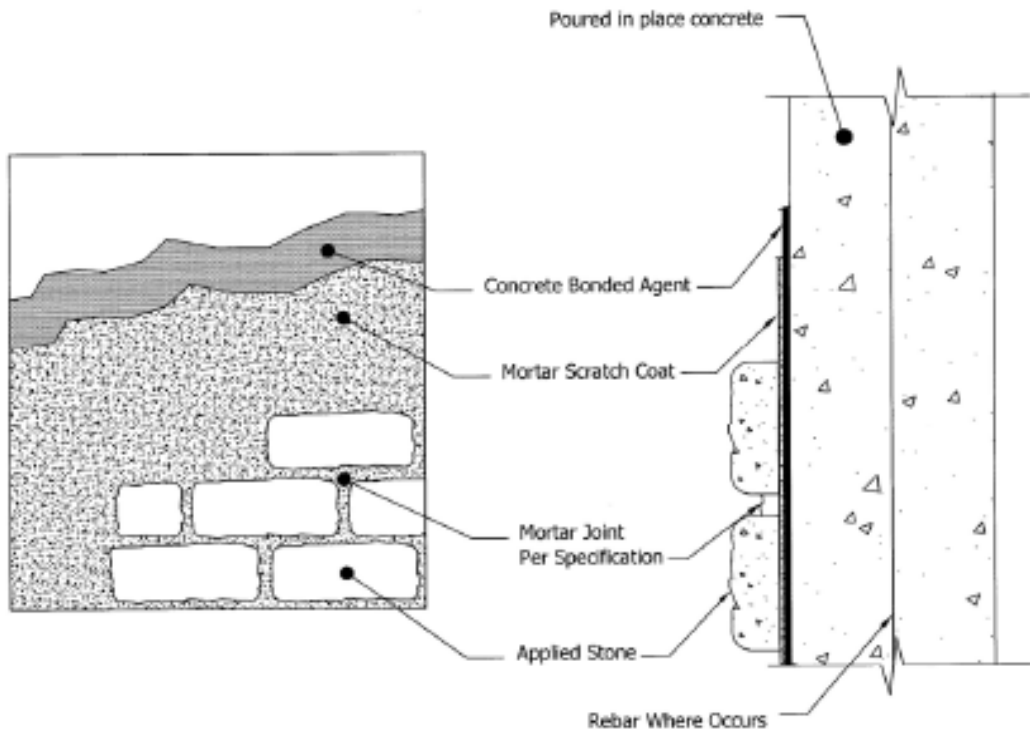
### **Specifications:**

- Mortar Scratch Coat and Mortar Joints (if applicable), proportions by volume:
  - Portland Type I/II Cement ASTM C-150 (1 part), Masonry Type-N Cement ASTM C-270 (1 part), Masonry sand ASTM C-144 (3 parts), water added to achieve firm, moist consistency, pigment (powder or liquid) ASTM C979 optional, <or>
  - Masonry Type-S Cement ASTM C270 (1 part), Masonry sand ASTM C-144 (3 parts), water added to achieve firm and moist consistency, pigment (powder or liquid) ASTM C979 optional
- Manufactured Stone Veneer and Accessories: meeting ICC-ES AC-51 Criteria
- Applied: per Environmental Stoneworks Manufactured Stone Veneer Installation Procedures



# ENVIRONMENTAL STONEWORKS

## Installation Over Poured Concrete Surfaces



### **Specifications:**

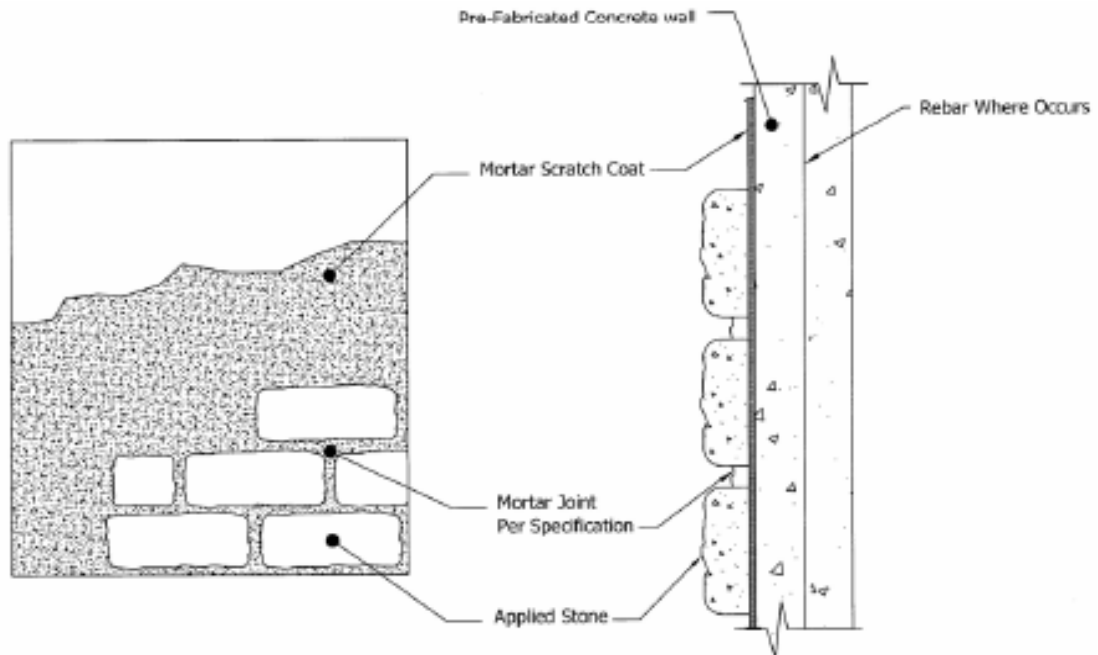
- **Concrete Bonding Agent:** Surface applied bonding agents that meet ASTM C 1059 or ASTM C 932. Integrally mixed (in mortar scratch coat) can be used such that mortar achieves minimum shear bond strength of 50 PSI when tested in accordance with ASTM C482. As an alternative to concrete bonding agent, corrosion resistant minimum 2.5 lbs per square yard expanded metal lath that complies with ASTM C 847 and applied with appropriate concrete fasteners may be used. Use concrete fastening pins with washers applied with a powder actuated fastening tool. Pins shall have a minimum shank length of 3/4 in. with a 0.145 in. head diameter and utilize a 16 gage washer.
- **Mortar Scratch Coat and Mortar Joints (if applicable),** proportions by volume:
  - Portland Type I/II Cement ASTM C-150 (1 part), Masonry Type-N Cement ASTM C-270 (1 part), Masonry sand ASTM C-144 (3 parts), water added to achieve firm, moist consistency, pigment (powder or liquid) ASTM C979 optional, <or>
  - Masonry Type-S Cement ASTM C270 (1 part), Masonry sand ASTM C-144 (3 parts), water added to achieve firm and moist consistency, pigment (powder or liquid) ASTM C979 optional
- **Manufactured Stone Veneer and Accessories:** meeting ICC-ES AC-51 Criteria
- **Applied:** per Environmental Stoneworks Manufactured Stone Veneer Installation Procedures





# ENVIRONMENTAL STONEWORKS

## Installation Over Tilt-up Concrete Structures



### **Specifications:**

- **Concrete Bonding Agent:** Surface applied bonding agents that meet ASTM C 1059 or ASTM C 932. Integrally mixed (in mortar scratch coat) can be used such that mortar achieves minimum shear bond strength of 50 PSI when tested in accordance with ASTM C482. As an alternative to concrete bonding agent, corrosion resistant minimum 2.5 lbs per square yard expanded metal lath that complies with ASTM C 847 and applied with appropriate concrete fasteners may be used. Use concrete fastening pins with washers applied with a powder actuated fastening tool. Pins shall have a minimum shank length of 3/4 in. with a 0.145 in. head diameter and utilize a 16 gage washer.
- **Mortar Scratch Coat and Mortar Joints (if applicable),** proportions by volume:
  - Portland Type I/II Cement ASTM C-150 (1 part), Masonry Type-N Cement ASTM C-270 (1 part), Masonry sand ASTM C-144 (3 parts), water added to achieve firm, moist consistency, pigment (powder or liquid) ASTM C979 optional, <or>
  - Masonry Type-S Cement ASTM C270 (1 part), Masonry sand ASTM C-144 (3 parts), water added to achieve firm and moist consistency, pigment (powder or liquid) ASTM C979 optional
- **Manufactured Stone Veneer and Accessories:** meeting ICC-ES AC-51 Criteria
- **Applied:** per Environmental Stoneworks Manufactured Stone Veneer Installation Procedures